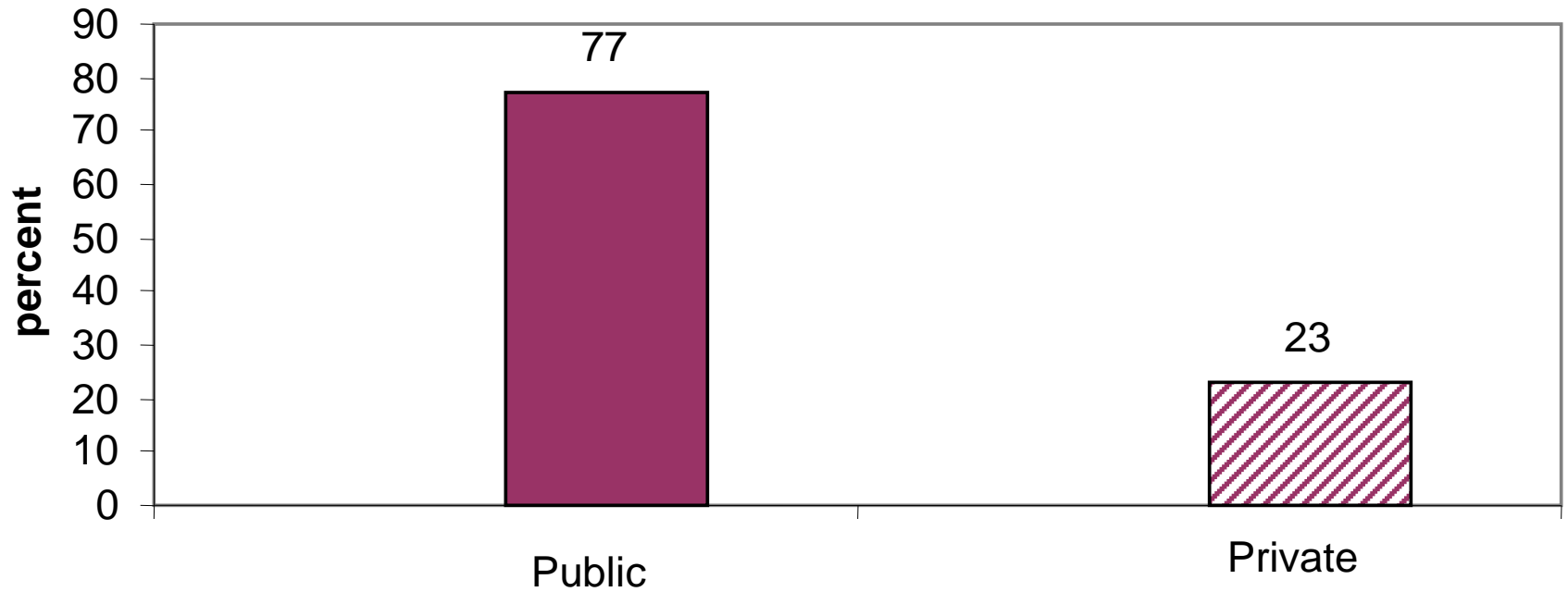


**Salary Supplementation Survey  
Association of Chairs of Departments of Physiology  
July 2005**

**Conducted by Irving H. Zucker, Ph.D.  
Department of Cellular and Integrative Physiology  
University of Nebraska Medical Center**

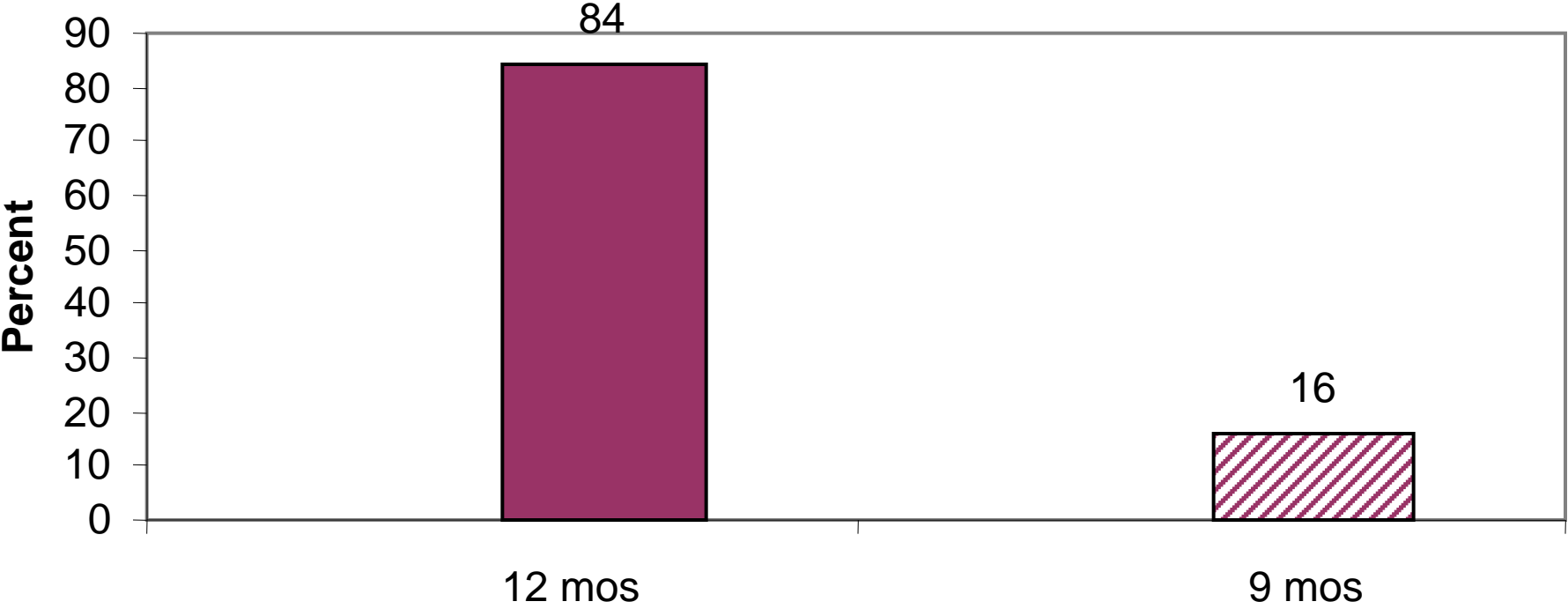


## Public vs Private

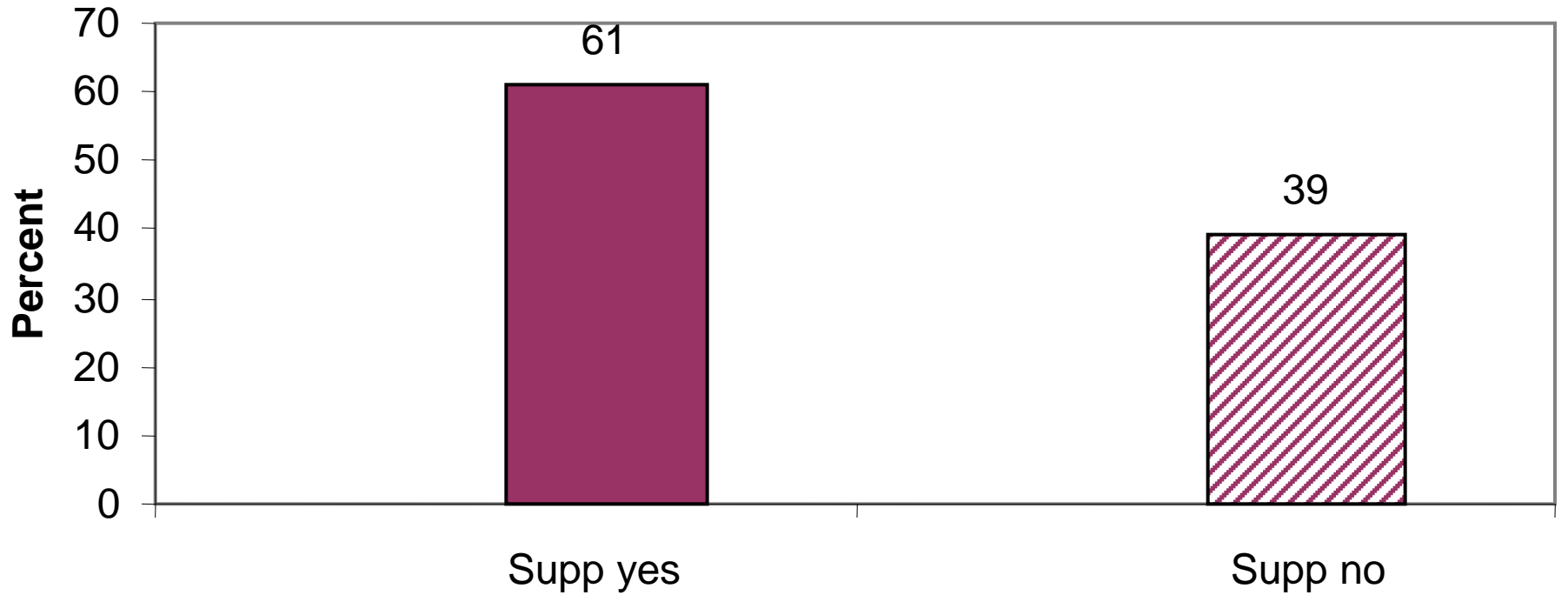


Number of schools responding = 70

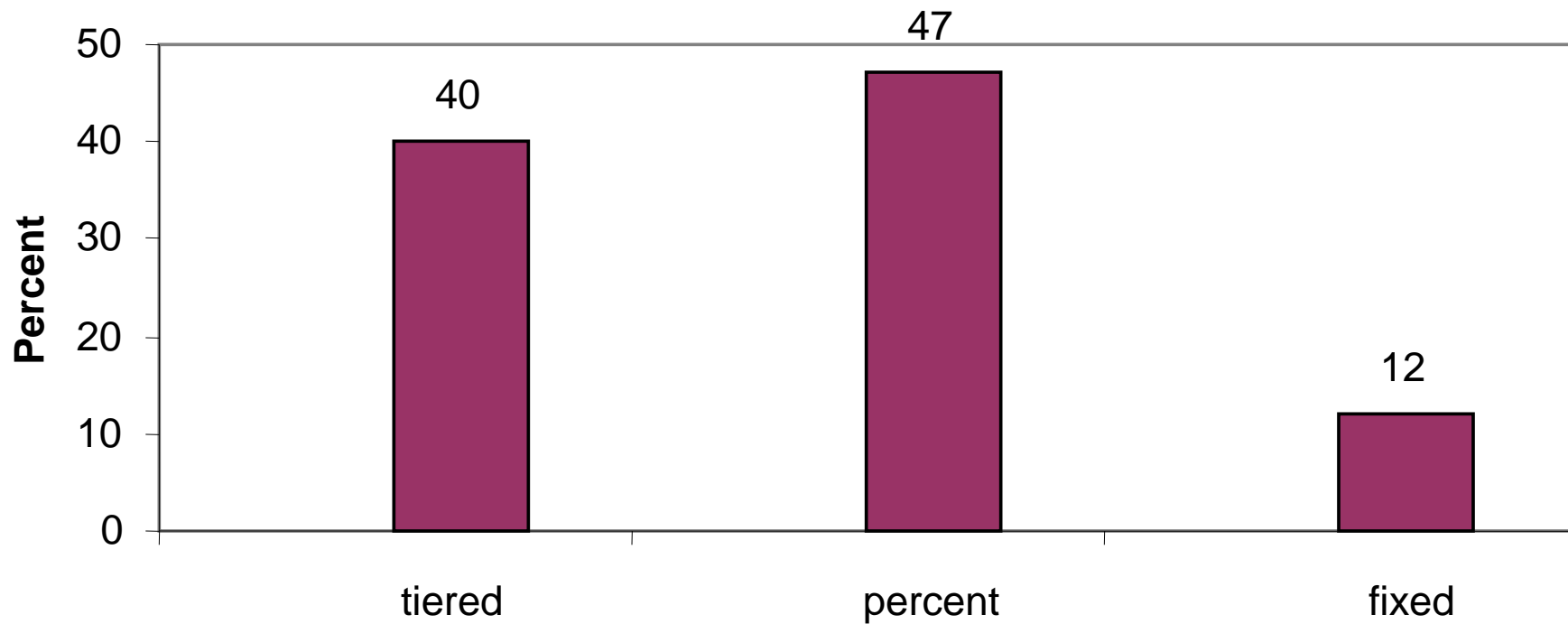
# Appointment type



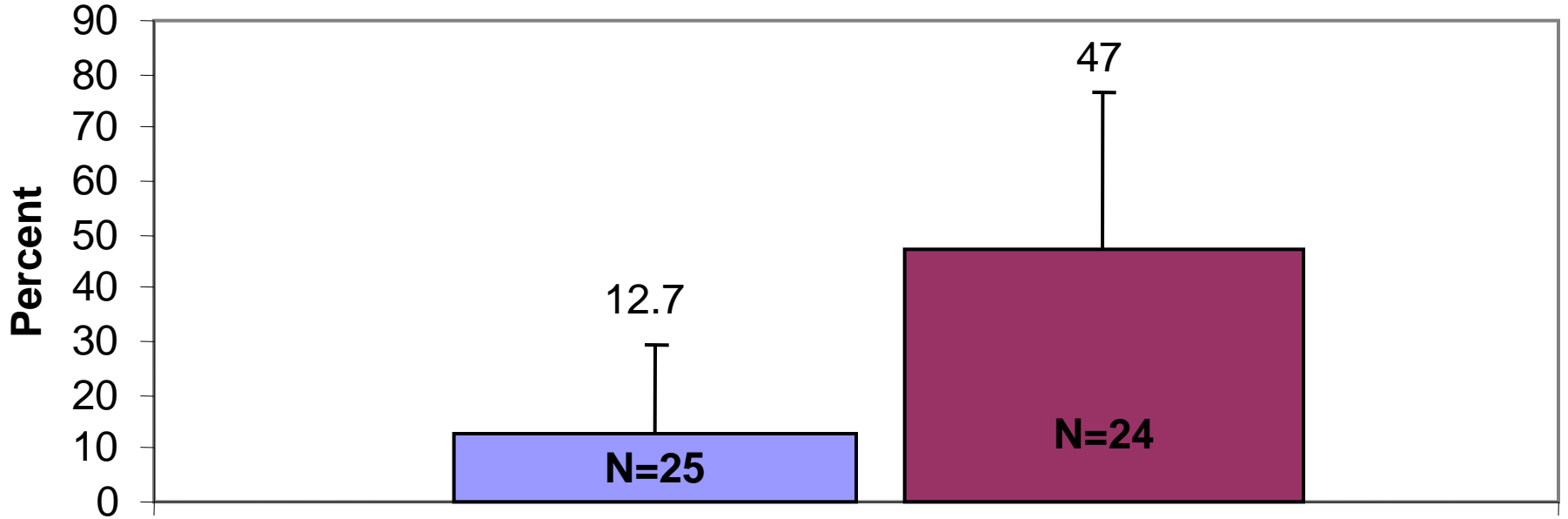
## Supplemental plans



## Type of Plan



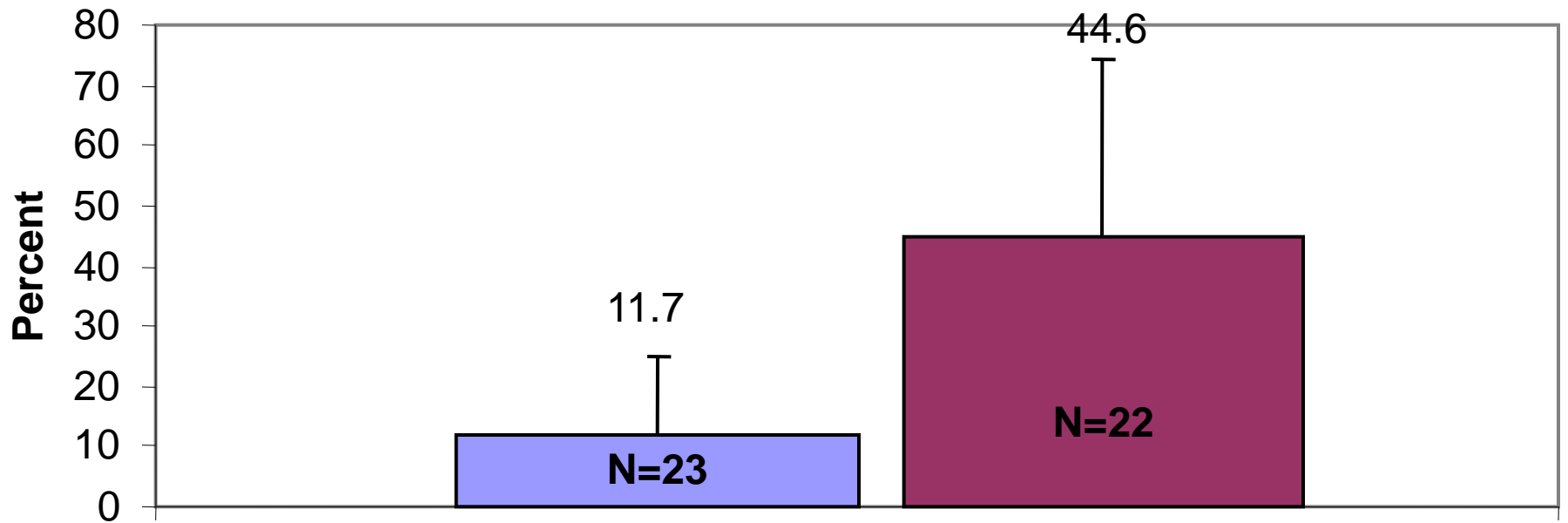
## Minimum and Maximum % (all schools)



Mean±SD

Range 0-no max

# Minimum and Maximum % (public)



# Minimum and Maximum (private)

