



JOHNS HOPKINS  
WHITING SCHOOL  
*of* ENGINEERING

---

**Inclusive Innovation Initiative**

# Supercharging Innovation Acceleration

Adler Archer, JD  
Managing Director, i3

# Inclusive Innovation within Organizations

Harnesses the power of all to innovate, solve problems, and lead transformation through unorthodox thinking and actions.



JOHNS HOPKINS

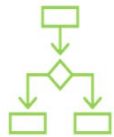
WHITING SCHOOL  
of ENGINEERING

Inclusive Innovation Initiative

# Innovation Types



**Technological Innovation:** New products, services or techniques, or significant improvements to existing products”



**Process Innovation:** New production or delivery method...including significant changes in techniques, equipment and/or software.”



**Administrative Innovation:** Extent to which organizations incorporate and routinely implement technological and process innovations.



JOHNS HOPKINS

WHITING SCHOOL  
of ENGINEERING

Inclusive Innovation Initiative

# Step by Step

Not so much...

Pursue vs Ensure?

Pathways and Ecosystems!

# Innovation Programs

**Students:**  
*CBID Spiral  
 Innovation Model*  
 Approach to Healthcare

Year MSE  
 University's  
 innovation and  
 gether  
 design and  
 develop new,  
 that solve some  
 ing people  
 ople right here in  
 unities in Kenya, Tanzania, and Nepal, our students work to



**Professionals:**  
*HEXCITE Software  
 Accelerator*

**Regional Innovators:**  
*Chesapeake Digital  
 Health Exchange*

**National Innovators:**  
*NeuroTech  
 Harbor*

# Student Innovation Program

## CBID Spiral Innovation Model

Approach to Healthcare

Learn MSE  
University's  
Innovation and  
gather  
design and  
develop new,  
that solve some  
ing people  
ople right here in  
unities in Kenya, Tanzania, and Nepal, our students work to



**1-year** academic program for graduate students interested in developing engineering solutions for global health challenges.

**Problem?** Students need a clinical immersion to identify what potential customers need, and more global exposure to health needs.

The four focus areas of training are

- Clinical – immersing themselves in medical environments and spotting issues current patients and healthcare workers challenges.
- Commercial – looking at any regulatory or compliance issues that could arise, as well as researching the competitive landscape and intellectual property strategies.
- Technical – translating clinical and commercial information into products with performance evaluation plans.
- Organizational – Identifying obstacles to medical device success, such as project financing, fundraising, team management, and more.

Antelehealth

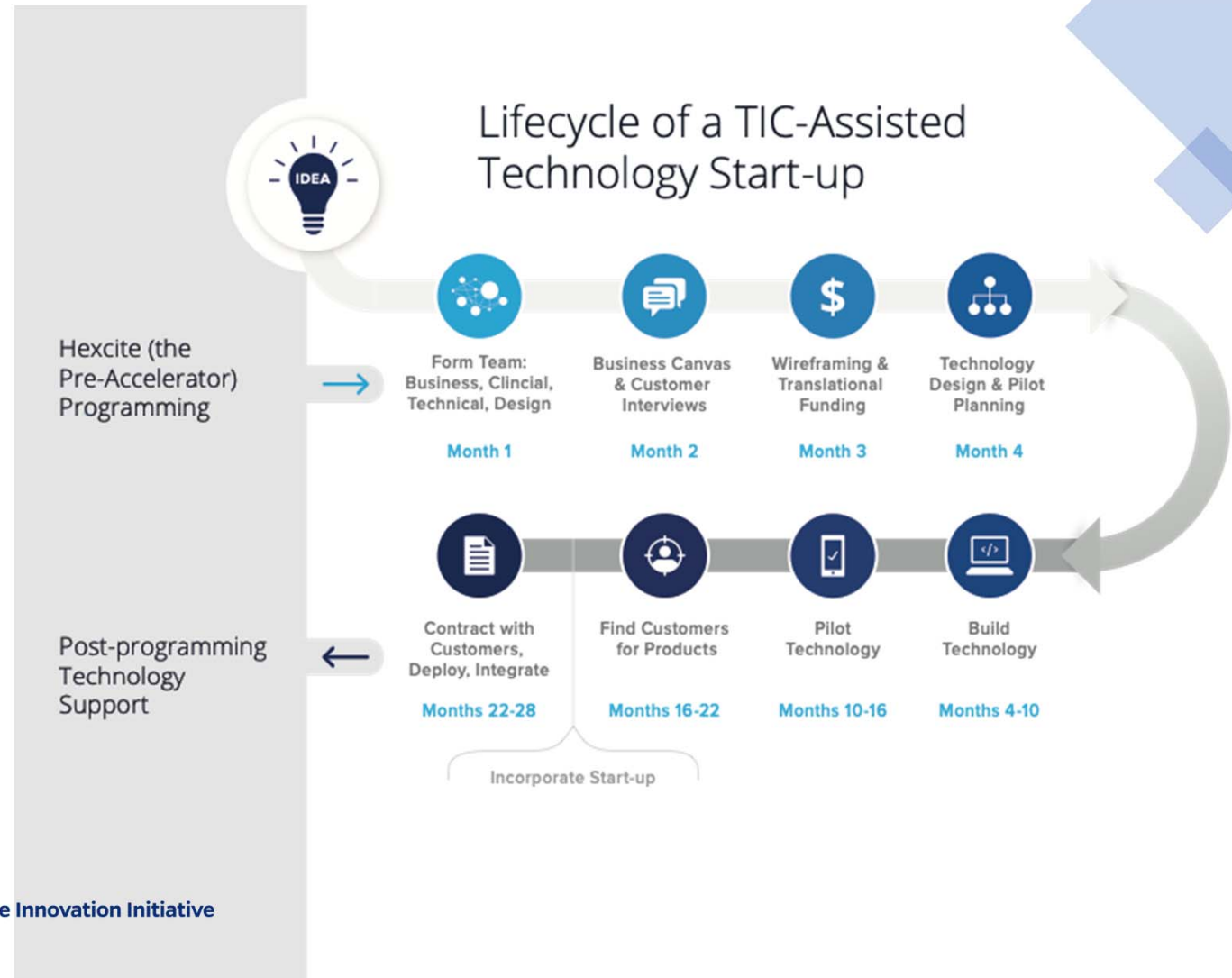
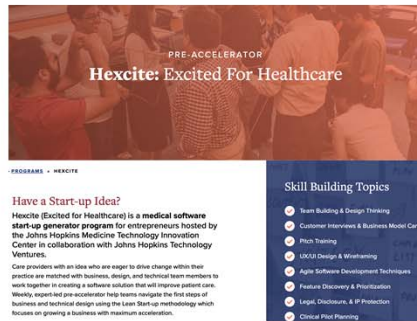


JOHNS HOPKINS  
WHITING SCHOOL  
of ENGINEERING

Inclusive Innovation Initiative

# Ideation Program

## HEXCITE Software Accelerator



# Regional Innovation Program

## Chesapeake Digital Health Exchange



*Fostering a Digital Health Innovation Ecosystem throughout the Chesapeake Region*



### **Network**

Building a network of influencers and connecting the digital health ecosystem



### **Talent**

Ensuring a strong pipeline of diverse talent in the region



### **Commercialization**

Accelerating the commercialization of promising digital health technologies





[What We Do](#) [Who We Are](#) [Resources](#) [Equitech](#) [News/Events](#)



Howdy, Aster Archer 



# Healing Disorders of the Nervous System

Groundbreaking medical devices

Apply



Inclusive Innovation Initiative

